



# **Response Mode to Scene Report**

**Florida Department of Health**

**Bureau of Emergency Medical Oversight**

**Health Information and Policy Analysis Program**

**Release Date: May 1, 2013**





# Response Mode to Scene Report

## Florida EMSTARS Database Report



**Date Range:** January 1, 2009- December 31, 2012

### **Purpose**

The purpose of this report is to analyze the percentages and times recorded in the EMSTARS database as it relates to the EMS unit's response mode to scene.

### **Definitions**

Response Mode to Scene - Indication whether or not lights and/or sirens were used on the vehicle on the way to the scene

En Route Response Time – En route response time refers to the time difference from when the unit is en route to the patient and when the unit arrives at the patient.

### **Required Data Elements**

- Agency Info ID
- Unit En Route Date Time
- Unit Arrived on Scene Date Time
- EMS Agency Number
- Type of Service Requested
- Call Dispatch Volume Year
- Total Service Size Area
- Total Service Area Population

### **Formulas**

- En Route Response Time = (Arrived At Patient Date Time – Unit En Route Date Time)

### **Linkages**

- N/A

### **Exclusions**

- Year not = 2009-2012
- En Route Response Times not between 0 - 2 hours
- Type of Service Requested not = 911 Response (Scene) Calls

All questions related to this report should be addressed to the following:  
Health Information and Policy Analysis Program  
Bureau of Emergency Medical Oversight  
Florida Department of Health  
4052 Bald Cypress Way, Bin A-22  
Tallahassee, FL 32399-1722  
(850) 245-4440  
[emstars@doh.state.fl.us](mailto:emstars@doh.state.fl.us)

**Time Format = hh:mm:ss**

EMSTARS records of emergency calls which contain patient information or treatment information are confidential and exempt from the provisions of section 119.07(1), Florida Statute and may only be disclosed with consent of the Department. §401.30(4), F.S. The department has utilized demographic data points to group agencies within a specific statistical group. This method provides EMS agencies the ability to compare their performance against a state benchmark as well as benchmark with agencies of like population, service size area, and call volume. This method preserves propriety and confidential information while providing a mechanism for the improvement of clinical care and emergency response.

Table I

State Average Response Time by Response Mode					
Response Mode Type	2009	2010	2011	2012	All
Initial Lights and Sirens, Downgraded to No Lights or Sirens	0:09:09	0:08:59	0:08:57	0:09:47	0:09:13
Initial No Lights or Sirens, Upgraded to Lights and Sirens	0:13:02	0:07:16	0:06:45	0:08:28	0:08:53
Lights and Sirens	0:07:00	0:07:06	0:07:07	0:07:11	0:07:06
No Lights or Sirens	0:10:00	0:09:59	0:10:13	0:12:09	0:10:35

Figure 1

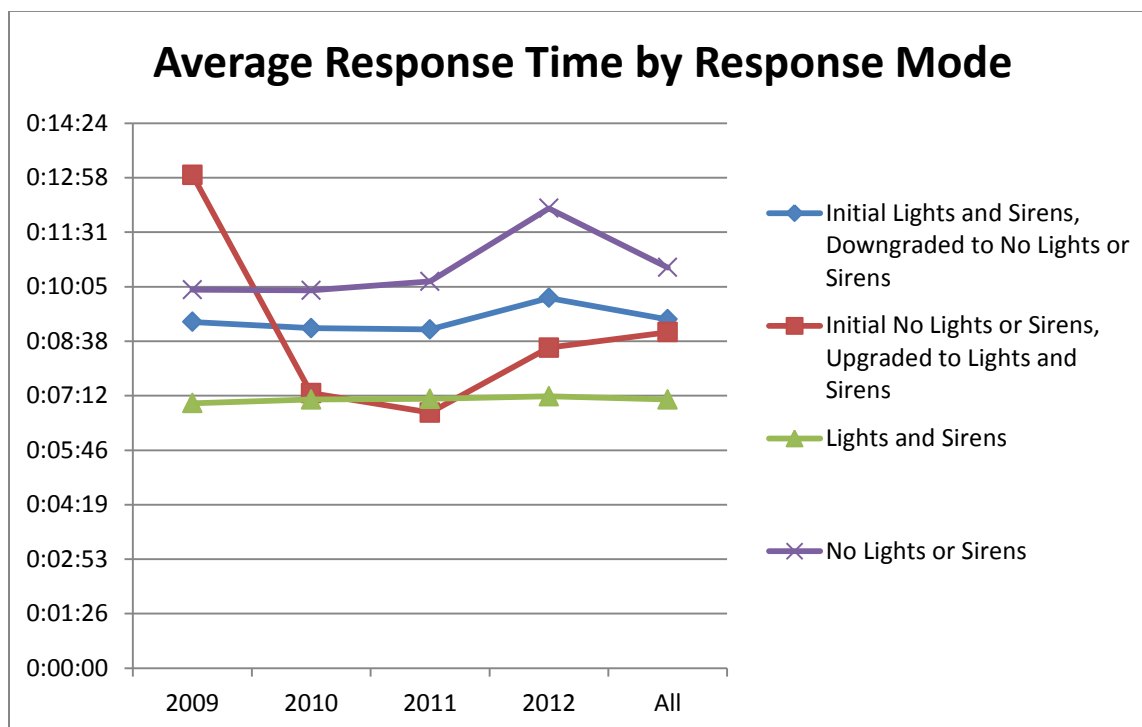


Table II

<b>Percentage of Responses Using Lights and Sirens</b>			
<b>Year</b>	<b>Lights and Sirens Responses</b>	<b>No lights or Sirens Responses</b>	<b>Percent of Responses with Lights and Sirens</b>
2009	676,890	97,228	87%
2010	829,752	121,390	87%
2011	1,074,129	127,917	89%
2012	1,322,496	208,434	86%

\* EMS records were a downgrade or upgrade to lights and sirens occurred are excluded from percentages

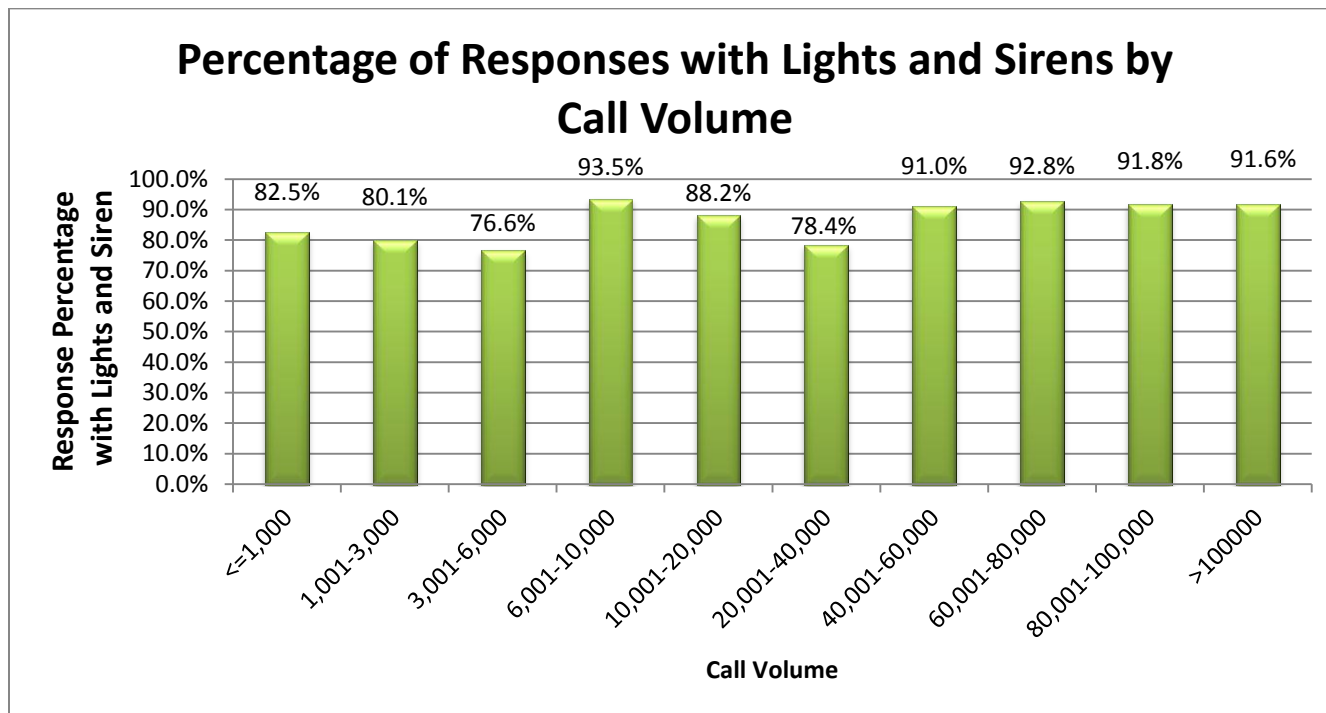
Table III

<b>Top Ten Complaints Reported by Dispatch with a Lights and Siren Response</b>		<b>Top Ten Complaints Reported by Dispatch <u>without</u> a Lights and Siren Response</b>	
<b>Providers Primary Impression</b>	<b>Count</b>	<b>Providers Primary Impression</b>	<b>Count</b>
Sick Person	649,861	Sick Person	117,399
Breathing Problem	424,918	Transfer/Interfacility/Palliative Care	58,720
Chest Pain	374,348	Fall Victim	58,356
Fall Victim	359,642	Traumatic Injury	49,087
Traffic Accident	327,617	Abdominal Pain	25,405
Unconscious/Fainting	224,132	Traffic Accident	19,745
Traumatic Injury	158,923	Chest Pain	17,253
Abdominal Pain	156,857	Breathing Problem	15,166
Convulsions/Seizure	149,061	Unknown Problem Man Down	13,901
Unknown Problem Man Down	102,196	Assault	13,360

\* NULL values are excluded

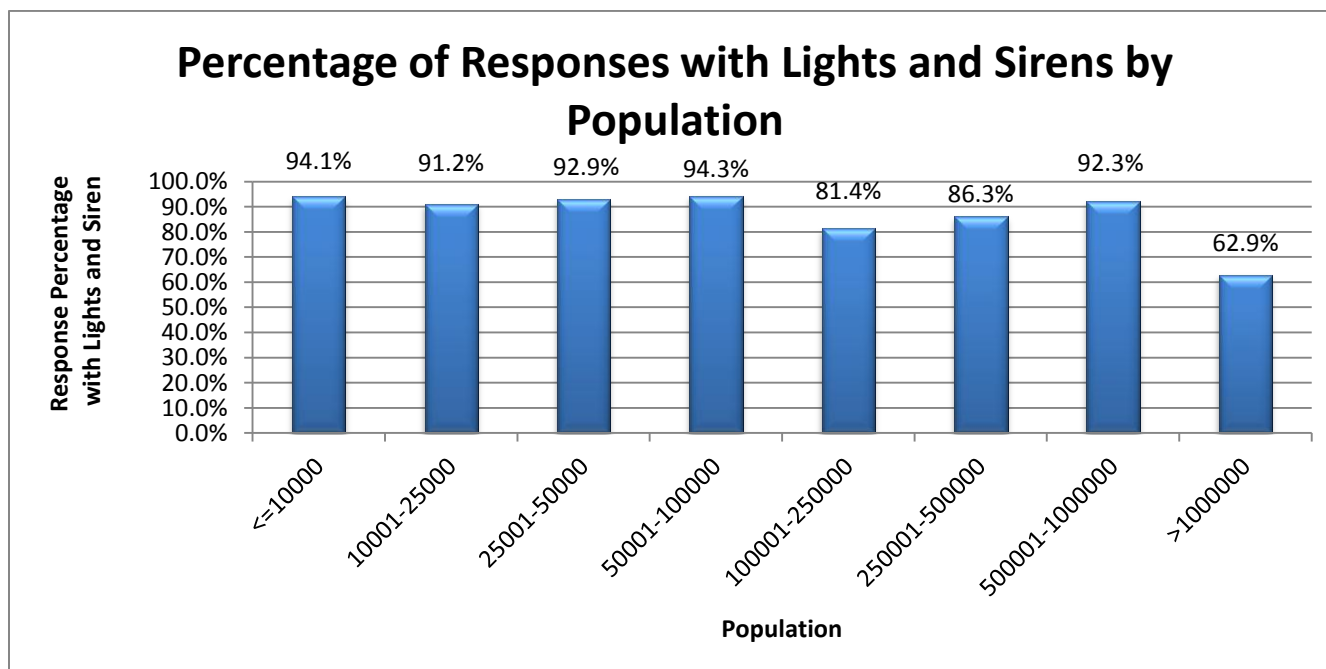
\* NULL values are excluded

Figure 2



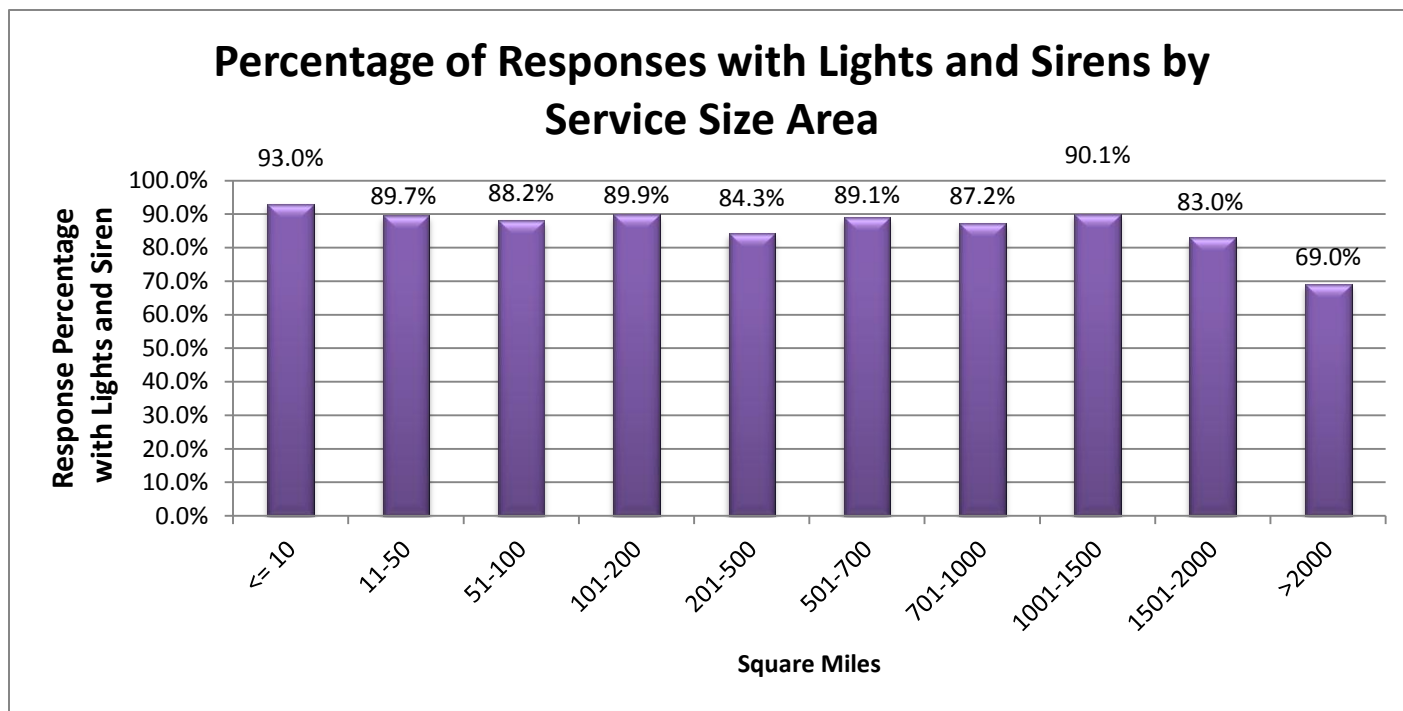
\* EMS records were a downgrade or upgrade to lights and sirens occurred are excluded from percentages

Figure 3



\* EMS records were a downgrade or upgrade to lights and sirens occurred are excluded from percentages

Figure 4



\* EMS records where a downgrade or upgrade to lights and sirens occurred are excluded from percentages